





















LGP para todos

#RESUMIR

#3 - Número a número

Números Cardinais

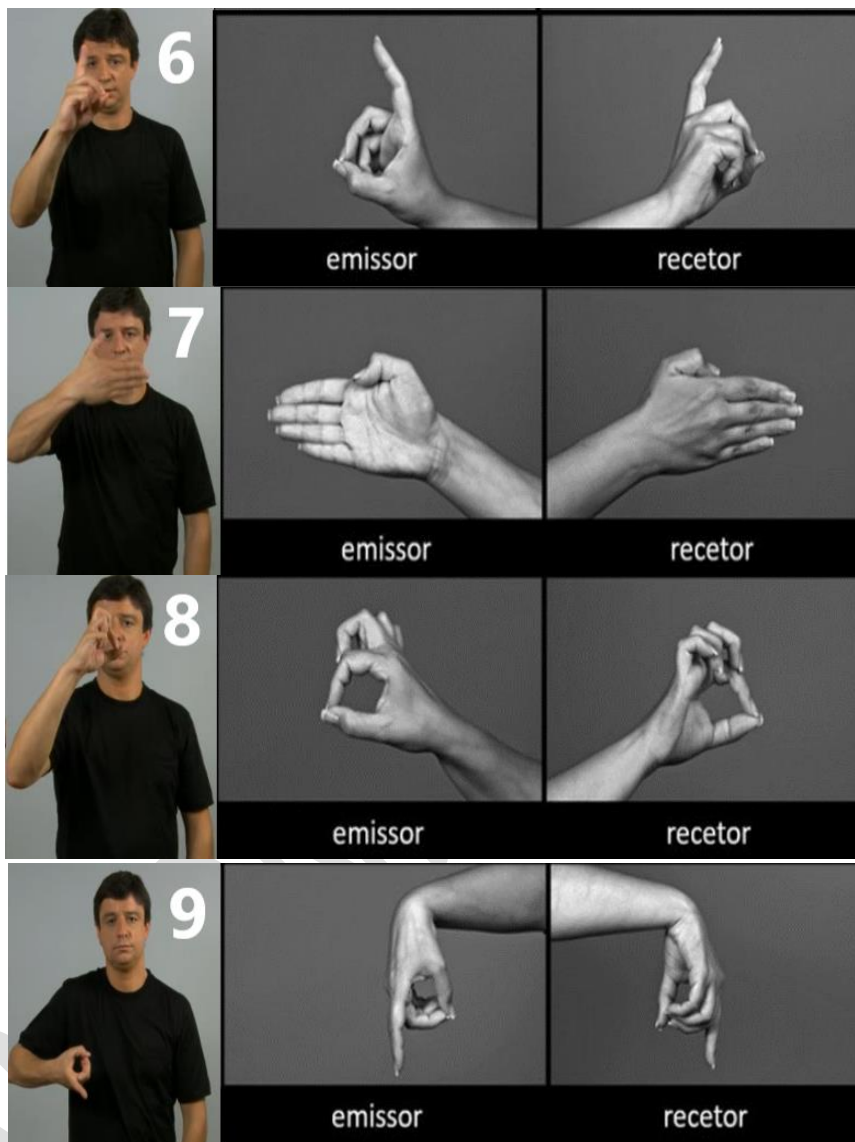
 0	 emissor	 recetor
 1	 emissor	 recetor
 2	 emissor	 recetor
 3	 emissor	 recetor
 4	 emissor	 recetor
 5	 emissor	 recetor



LGP para todos

#RESUMIR

#3 - Número a número



NOTA: Quando um número for muito grande, iremos prosseguir como se fossem palavras, realizando número a número até chegar ao número pretendido. EX: 567,88

Gestuar /5+6+7+ (desenhar vírgula com o dedo indicador) + 8 + 8/



LGP para todos

#RESUMIR

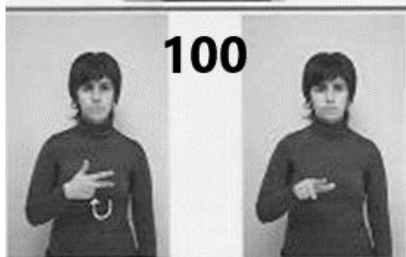
#3 - Número a número

Números que não seguem a norma-padrão, tendo gesto próprio:

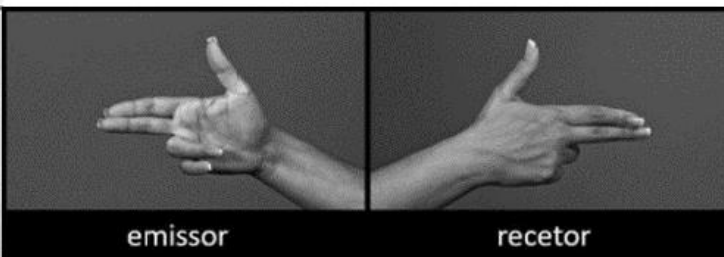


10

IMAGEM EM AULA

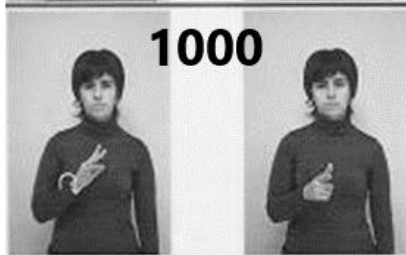


100



emissor

recetor



1000



emissor

recetor

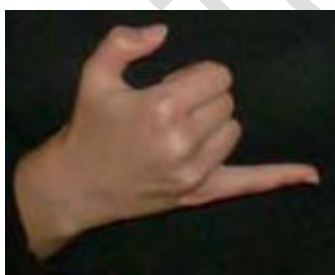


emissor

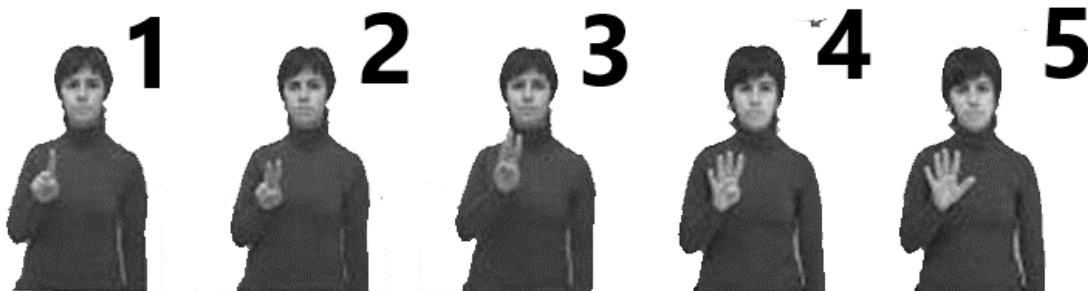
recetor

NÚMEROS DE 11 a 20 (VER VÍDEO-AULA)

NÚMERO 25 (CASO IRREGULAR)



Números que indicam quantidade:





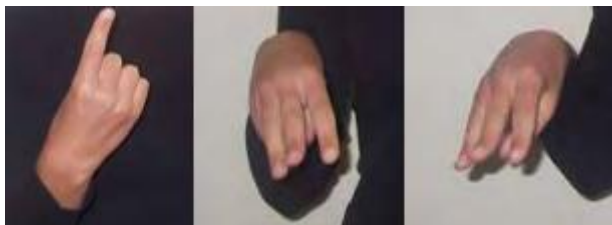
LGP para todos

#RESUMIR

#3 - Número a número

Estas configurações usam-se para indicar quantidade de 1 a 5. Para os restantes números, utilizam-se as configurações dos números cardinais.

MILHÃO:



Acima temos a representação de 1 milhão. Caso queiramos representar dois ou três, indicamos com os dedos, como faríamos em "mímica".

ANTÔNIO COITO